

# Aolynk DR814Q ADSL2+ Broadband Router

## Quick Start

### 1 Packing List

Unpack the shipping carton carefully and check the following items listed below:

- One Aolynk DR814Q ADSL2+ Broadband Router
- One power adapter
- One telephone cable
- One Ethernet cable
- One USB cable
- Two sets of screws and anchors
- Aolynk DR814Q ADSL2+ Broadband Router Quick Start
- CD including a user manual and a driver
- Certificate of Quality
- Warranty Card

If anything is broken or missing, contact your agent for help.

### 2 Installation

#### 2.1 Installation Precautions

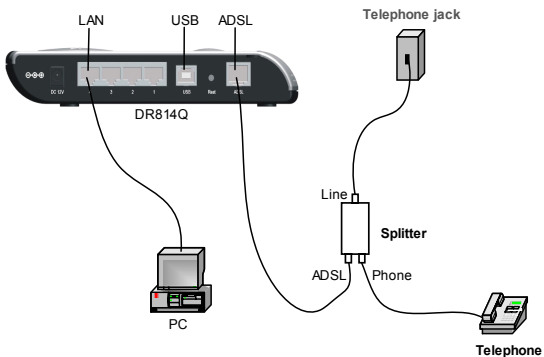
- Use the DR814Q indoors and keep it far away from the heat sources and water/liquid.
- Keep the cabinet or desk stable enough to hold the DR814Q. Fix the DR814Q and power adapter well on the wall when wall-mounting it.
- Reserve more than 10 cm (4 in.) of clearance around the DR814Q chassis for heat dissipation.
- Wire the port cable indoors. Outdoor cabling is prohibited, to prevent the signal port from damages that may be caused by overvoltage and overcurrent from lightning strike.

#### 2.2 Device Connection

##### I. Connect to an ADSL line

To connect to an ADSL line, you have two options:

- Connect one end of the telephone cable to the ADSL port on the DR814Q rear panel, and the other end to the telephone jack on the wall.
- As shown in Figure 1, connect the ADSL port of the DR814Q to a splitter via the telephone cable and a telephone to the splitter, too. Then, connect the splitter to the telephone jack on the wall. In this option, you can use the telephone and access the network at the same time.



**Figure 1** Connect the DR814Q

## II. Connect to a PC or the Ethernet

The Ethernet ports available with the DR814Q support auto-MDI/MDIX, so you can use crossover or straight-through cables to connect a PC, hub, or switch to those ports (LAN 1 through LAN 4).

## III. Connect to the power adapter

(1) Attach one end of the included power adapter to the DR814Q and the other end to the power socket.

(2) Approximately one minute after the power-on of the DR814Q, the states of the LEDs on the front panel should be those listed in Table 1.

**Table 1** LED description

LED	State	Description
Power	ON	The power is ON and the operation is normal.
Link	ON	The ADSL link is normal.
Act	Blinking	Data is being transmitted and/or received on the ADSL link.
LAN	ON/Blinking	The Ethernet link is normal.
Diag	OFF	Contact the agent for help if this LED is ON.

### 3 Prerequisite Tasks

- (1) Configure the PC to obtain an IP address and DNS server address(es) automatically.
- (2) Check the proxy server. If the PC uses the proxy server to access the Internet, you must disable the proxy service.
- (3) Run the Web browser and enter **http://192.168.1.1** (default IP address of the LAN port of the DR814Q) in the address bar of the browser.
- (4) The login dialog box appears, as shown in Figure 2. Type in the default username (admin) and the password (admin), and then click <OK>. You can change the password after entering the Web configuration page.

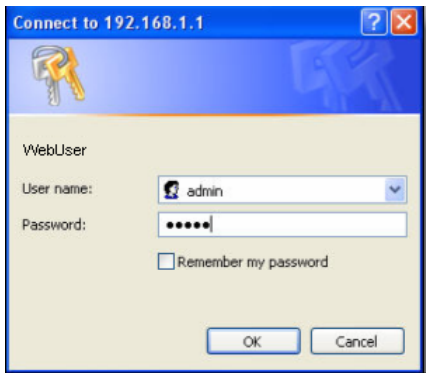


Figure 2 Type in the username and password

- Note:**
1. The DR814Q provides the automatic dialing function, thus the dialing software (PPPoE dialing software, for example) provided by the operation system or other client dialing software is not needed and can be uninstalled.
  2. Only English input is supported by the DR814Q.

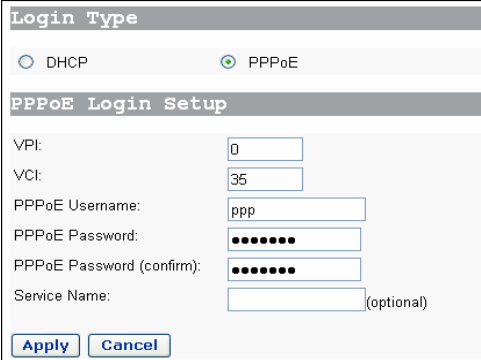
### 4 Configuration Guidelines

After you log into the Web configuration page, follow those simple steps to finish the quick setup of the DR814Q:

## I. Set parameters

Click [Quick Setup] in the navigation bar to enter the corresponding page.

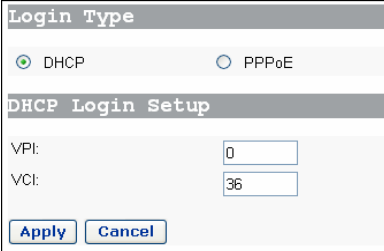
- To access a network by PPPoE dial-up connection: Select the PPPoE option, type in the VPI/VCI value, the username and password required for the dial-up connection which are provided by your ISP, and then click <Apply>.



The screenshot shows a dialog box titled "Login Type". At the top, there are two radio buttons: "DHCP" (unselected) and "PPPoE" (selected). Below this is a section titled "PPPoE Login Setup". It contains several input fields: "VPI:" with the value "0", "VCI:" with the value "35", "PPPoE Username:" with the value "ppp", "PPPoE Password:" with masked characters "••••••", "PPPoE Password (confirm):" with masked characters "••••••", and "Service Name:" with an empty field and "(optional)" text to its right. At the bottom left, there are two buttons: "Apply" and "Cancel".

**Figure 3** Quick Start – PPPoE Login

To access a network by DHCP in which case the IP address can be automatically obtained from your ISP's DHCP server: Select the DHCP option, type in the VPI/VCI value specified by your ISP, and then click <Apply>.



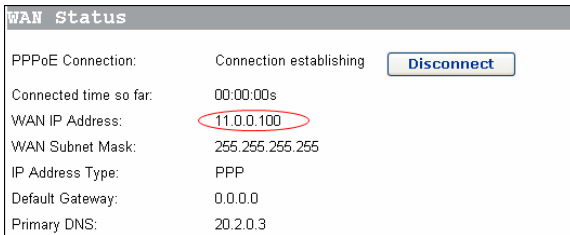
The screenshot shows a dialog box titled "Login Type". At the top, there are two radio buttons: "DHCP" (selected) and "PPPoE" (unselected). Below this is a section titled "DHCP Login Setup". It contains two input fields: "VPI:" with the value "0" and "VCI:" with the value "36". At the bottom left, there are two buttons: "Apply" and "Cancel".

**Figure 4** Quick Start – DHCP Login

**Note:** You can consult your local ISP for the VPI/VCI value, the username and password required for the configuration.

## II. Display IP address of the WAN port on the DR814Q

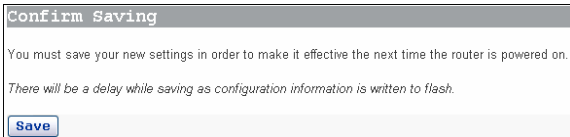
After a while, click [Status] in the navigation bar to enter the [Status] page. A new public IP address for the WAN IP Address item has replaced the previous 0.0.0.0, indicating that the DR814Q has connected to a network.



**Figure 5** Status

## III. Save configuration

Click [Save Config] in the navigation bar to enter the [Save configuration] page. Click <Save> to save the configuration you have made.



**Figure 6** Save configuration

**Note:** For more details of installation and advanced configuration, refer to the user manual in the CD. In addition, you can visit [www.huawei-3com.com](http://www.huawei-3com.com) at any time to download the latest version of software and user manual.

## 5 Quick Troubleshooting

Table 2 Quick troubleshooting

Symptom	Solution
The Power LED is OFF.	Make sure: <ul style="list-style-type: none"><li>• The power adapter that comes with the DR814Q is used.</li><li>• The power connection is correct.</li></ul>
The LAN LED is OFF.	Make sure that: <ul style="list-style-type: none"><li>• The Power LED is ON.</li><li>• The Ethernet cable is connected to the port correctly.</li><li>• The used Ethernet cable is in good condition: Connect two ends of the cable to the LAN ports of the DR814Q respectively, and observe whether the corresponding LEDs turn on. If not, replace the Ethernet cable and make the connection as described in section 2.2 "Device Connection".</li><li>• The network interface card (NIC) is in good condition, especially the complete installation of its driver.</li></ul>
The Link LED is OFF.	Make sure that the RJ-11 telephone cable is used and correctly connected to the ADSL port on the DR814Q and the telephone port respectively.
The Web configuration page cannot be accessed.	Make sure that: <ul style="list-style-type: none"><li>• The LAN LED is ON.</li><li>• The proxy service has been disabled.</li><li>• The PC and the DR814Q are in the same network segment.</li><li>• You can ping the IP address of the LAN port on the DR814Q (192.168.1.1) successfully.</li></ul>
The login password is forgotten.	The default username and password are both <b>admin</b> . If you have changed the password, press and hold the Reset button for five seconds to restore the default settings on the DR814Q. Then, you can type in the default username and password to access the Web configuration page. Note that the reset function restores all the factory default settings.
The modification made on the Web configuration page is not saved.	Make sure you click <Apply> to save every modification. After you complete all the settings, enter the [Save configuration] page to save them so that the settings will be valid the next time you power on the DR814Q.